



*Supporting Structures: Innovative Collaborations to Enhance  
STEM Research at CCCU Member Institutions*

## **2021 Report on Diversity at CCCU Institutions**

Jeff Clawson, Pete Jordan, Megan Loumagne Ulishney, and Stan Rosenberg  
September 2021

This report was made possible through the support of a grant from the John Templeton Foundation. The opinions expressed in this report are those of the authors and do not necessarily reflect the views of the John Templeton Foundation.

© 2021 Scholarship and Christianity in Oxford and the Council for Christian Colleges and Universities.

This report on U.S. Governing Member (n=112) and US-based Collaborative Partner (n=7; Baylor University not included) institutions of the Council for Christian Colleges and Universities (CCCU) covers the years 1994-95 through 2018-19 (or 2017-18 if the more recent data is not available). The institutions included in the study were members as of April 2020.

The data in this report comes from the U.S. Department of Education, National Center for Education Statistics, Integrated Postsecondary Education Data System (IPEDS). Some data (such as faculty ethnicity) were not mandatory to report to IPEDS in some of the years covered by this report. Therefore, some years contain data from fewer institutions. Where relevant, sample sizes are indicated.

Throughout the report, “degrees” refers to bachelor degrees.

# Part 1: Diversity Across All Subjects And Disciplines

Table A: Average Number Of Fulltime Faculty Members By Ethnicity And Gender

Table A depicts the average number of fulltime faculty members across all subjects and disciplines per CCCU institution by ethnicity and gender between 1994-95 and 2017-18.

Faculty members at these institutions predominantly identify as White, although small increases among the number of faculty identifying as American Indian/Alaskan Native and Asian did occur. The proportion of female faculty members identifying as Latina and White increased as well.

**Table A: Average Number Of Fulltime Faculty Members By Ethnicity And Gender**

Year	American In./Alaskan Native		Asian		Black/African Am.		Latina/o		Nat. Hawaiian/Pac. Islander		White		Two or More Races		Race/Ethnicity Unknown		NonResident Alien	
	Women	Women	Women	Women	Women	Women	Women	Women	Women	Women	Women	Women	Women	Women	Women	Women	Women	Women
1995	0.2	39.1%	1.5	45.7%	3.1	53.6%	1.8	36.9%	N/A	N/A	85.3	36.4%	N/A	N/A	0.4	32.6%	0.2	34.8%
2005	0.3	51.5%	3.3	42.5%	4.4	51.7%	3.0	39.6%	N/A	N/A	103.5	39.9%	N/A	N/A	1.2	31.2%	0.7	32.1%
2010*	0.3	42.9%	5.4	49.0%	5.5	53.9%	5.5	40.3%	0.1	50.0%	116.1	42.6%	1.4	64.4%	2.3	42.3%	1.2	40.0%
2012**	0.5	20.8%	5.6	41.5%	5.0	54.7%	3.4	50.6%	0.7	8.8%	118.1	40.0%	1.3	41.5%	2.3	41.6%	1.0	40.0%
2013	0.3	41.0%	3.9	44.8%	3.6	54.8%	2.6	42.5%	0.2	79.2%	91.8	39.8%	0.7	45.0%	2.8	39.6%	0.7	33.3%
2014***	0.3	56.3%	5.7	46.2%	4.5	55.8%	3.3	44.8%	0.2	27.3%	104.8	40.5%	0.9	39.5%	1.1	49.1%	0.6	35.5%
2015	0.4	40.0%	4.1	48.0%	3.8	54.0%	2.8	43.0%	0.4	15.4%	93.1	41.2%	0.7	47.7%	2.3	47.4%	0.6	38.0%
2016	0.4	46.0%	4.5	47.7%	4.1	55.2%	3.0	45.8%	0.2	31.6%	94.1	42.3%	1.0	47.0%	2.1	46.6%	0.6	30.1%
2017	0.4	37.8%	4.8	47.0%	4.6	55.2%	3.1	48.6%	0.2	21.7%	95.1	42.8%	1.0	57.8%	1.7	45.0%	0.8	40.6%
2018	0.4	36.4%	4.9	46.2%	4.9	56.7%	3.2	49.6%	0.2	40.0%	95.1	43.4%	1.0	54.9%	2.3	43.5%	0.7	37.9%

Source: U.S. Department of Education, National Center for Education Statistics, Integrated Postsecondary Education Data System (IPEDS).

\*n=54, \*\*n=49, \*\*\*n=50

Table B: Fulltime Faculty Member Ethnicity Composition

Table B depicts the composition of fulltime faculty membership across all subjects and disciplines by ethnicity across CCCU institutions between 1994-95 and 2017-18.

The percentage of faculty members who identify as White decreased from 92.3% in 1995 to 84.4% in 2018. Small increases in ethnic representation occurred among faculty members who identify as Black/African American, Asian, and Latina/o.

**Table B: Fulltime Faculty Member Ethnicity Composition**

Year	American In./Alaskan Native	Asian	Black/African Am.	Latina/o	Nat. Hawaiian/Pac. Islander	White	Two or More Races	Race/Ethnicity Unknown	NonResident Alien
1995	0.21%	1.60%	3.33%	1.98%	N/A	92.27%	N/A	0.40%	0.21%
2005	0.24%	2.84%	3.74%	2.62%	N/A	88.95%	N/A	1.04%	0.57%
2010*	0.19%	3.95%	3.97%	4.01%	0.11%	84.27%	0.98%	1.65%	0.87%
2012**	0.35%	4.07%	3.65%	2.48%	0.50%	85.57%	0.96%	1.67%	0.74%
2013	0.31%	3.71%	3.35%	2.41%	0.19%	86.14%	0.64%	2.59%	0.65%
2014**	0.26%	4.71%	3.72%	2.72%	0.18%	86.31%	0.71%	0.87%	0.51%
2015	0.35%	3.82%	3.55%	2.62%	0.41%	85.91%	0.69%	2.10%	0.56%
2016	0.38%	4.12%	3.77%	2.73%	0.15%	85.52%	0.88%	1.90%	0.56%
2017	0.34%	4.33%	4.15%	2.75%	0.17%	85.15%	0.87%	1.52%	0.72%
2018	0.33%	4.38%	4.39%	2.81%	0.15%	84.38%	0.91%	2.01%	0.65%

Source: U.S. Department of Education, National Center for Education Statistics, Integrated Postsecondary Education Data System (IPEDS)

\*n=54, \*\*n=49, \*\*\*n=50

Table C: Enrolled Student Ethnicity And Gender Composition

Table C depicts the ethnicity and gender composition of all enrolled students at CCCU institutions between 1994-95 and 2017-18.

The proportion of students identifying as White decreased by nearly 20%. The proportion of students identifying as Latina/o increased by nearly 10%. Small increases also occurred among students identifying as Asian and as Black/African American, although the latter has decreased since peaking in 2010.



**Table C: Enrolled Student Ethnicity And Gender Composition**

Year	American In./Alaskan Native		Asian		Black/African Am.		Latina/o		Nat. Hawaiian/Pac. Islander		White		Two or More Races		Race/Ethnicity Unknown		NonResident Alien	
		Women		Women		Women		Women		Women		Women		Women		Women		Women
1995	0.6%	52.9%	2.3%	56.5%	5.9%	56.5%	3.1%	54.2%	N/A	N/A	82.2%	56.8%	N/A	N/A	3.1%	55.9%	2.9%	47.2%
2000	0.7%	59.8%	1.9%	58.7%	7.2%	61.8%	3.8%	58.0%	N/A	N/A	80.7%	58.4%	N/A	N/A	3.3%	60.0%	2.4%	49.8%
2005	0.8%	59.8%	2.3%	59.6%	8.8%	64.5%	5.0%	60.6%	N/A	N/A	76.5%	59.0%	N/A	N/A	4.4%	59.7%	2.2%	49.9%
2010	0.7%	59.2%	2.5%	44.8%	9.7%	61.2%	6.7%	61.3%	0.2%	54.6%	70.1%	59.0%	1.0%	60.3%	6.7%	58.8%	2.3%	48.2%
2015	0.6%	59.0%	3.0%	60.4%	9.6%	58.4%	10.3%	62.6%	0.3%	52.1%	65.2%	59.9%	3.2%	59.2%	4.8%	58.4%	3.0%	46.6%
2016	0.6%	59.0%	3.0%	60.6%	9.6%	58.2%	10.7%	63.2%	0.3%	53.9%	64.5%	60.1%	3.4%	59.6%	4.8%	58.3%	3.0%	46.4%
2017	0.6%	59.4%	3.1%	60.4%	9.5%	57.3%	11.3%	62.7%	0.3%	51.7%	64.2%	60.2%	3.6%	59.3%	4.4%	58.5%	3.0%	45.5%
2018	0.6%	59.2%	3.2%	61.5%	9.1%	56.4%	11.9%	62.5%	0.3%	53.0%	63.2%	60.4%	3.8%	59.7%	4.7%	59.1%	3.3%	46.1%

Source: U.S. Department of Education, National Center for Education Statistics, Integrated Postsecondary Education Data System (IPEDS)

### Table D: Average Ratio Of Enrolled Students To Faculty Members By Ethnicity

Table D shows the average ratio of enrolled students to faculty members by ethnicity averaged across all CCCU institutions. The values shown are averages across every institution, regardless of whether a given institution has both faculty members and students of a given ethnicity.

The student-to-faculty ratio has remained relatively constant among faculty members and students identifying as White or Asian.

The ratio for American Indian/Alaskan Native has reduced, but it remains higher than for students identifying as either White or Asian. The ratio for Black/African American has varied considerably, and it also remains higher than for students identifying as either White or Asian. The ratio for Latina/o students increased, and it remains higher than for White, Asian, or Black/African American students.

The increase in ratio for Latino/a average has occurred at the same time as the proportion of enrolled students who identify as Latino/a has increased (Table C).

**Table D: Average Ratio Of Enrolled Students To Faculty Members By Ethnicity**

Year	American In./Alaskan Native	Asian	Black/African Am.	Latina/o	Nat. Hawaiian/Pac. Islander	White	Two or More Races	Race/Ethnicity Unknown	NonResident Alien
1995	41.8	21.7	26.9	24.4	N/A	13.5	N/A	117.6	198.1
2005	48.0	12.4	36.0	29.3	N/A	13.1	N/A	66.0	58.3
2010	49.5	8.9	33.8	23.4	27.6	11.5	14.2	56.4	37.3
2012	28.4	9.9	38.8	45.9	6.9	11.4	31.2	46.1	48.9
2013	39.2	14.9	52.4	68.4	25.8	14.6	73.1	41.8	76.0
2014	38.6	10.6	42.5	58.3	29.6	12.7	66.6	94.9	92.4
2015	31.3	14.6	50.0	72.6	14.9	14.0	86.7	42.3	99.2
2016	27.9	13.5	46.9	72.2	38.9	13.9	71.5	46.2	98.4
2017	31.6	13.1	41.5	74.4	33.9	13.7	74.7	52.2	76.1
2018	31.0	13.0	37.3	76.4	37.7	13.5	74.9	41.7	90.7

Source: U.S. Department of Education, National Center for Education Statistics, Integrated Postsecondary Education Data System (IPEDS)

Table E: Average Ratio Of Enrolled Students To Faculty Members By Ethnicity In 2018

Table E shows the percentile distribution of ratios of enrolled students to faculty members by ethnicity averaged across only those CCCU institutions that have both faculty members and students of that ethnicity.

As the percentiles indicate, the student-to-faculty ratios range much more widely among faculty members and students identifying as Black/African American, Latina/o, and Two or More Races than among those identifying as White.

Figure E1 depicts percentiles for every ethnicity simultaneously, while Figure E2 depicts percentiles for each ethnicity separately. As these figures indicate, the highest student-to-faculty ratios typically occur among a very small number of institutions lying within the upper half of the fourth quartile (75<sup>th</sup>-100<sup>th</sup> percentile).

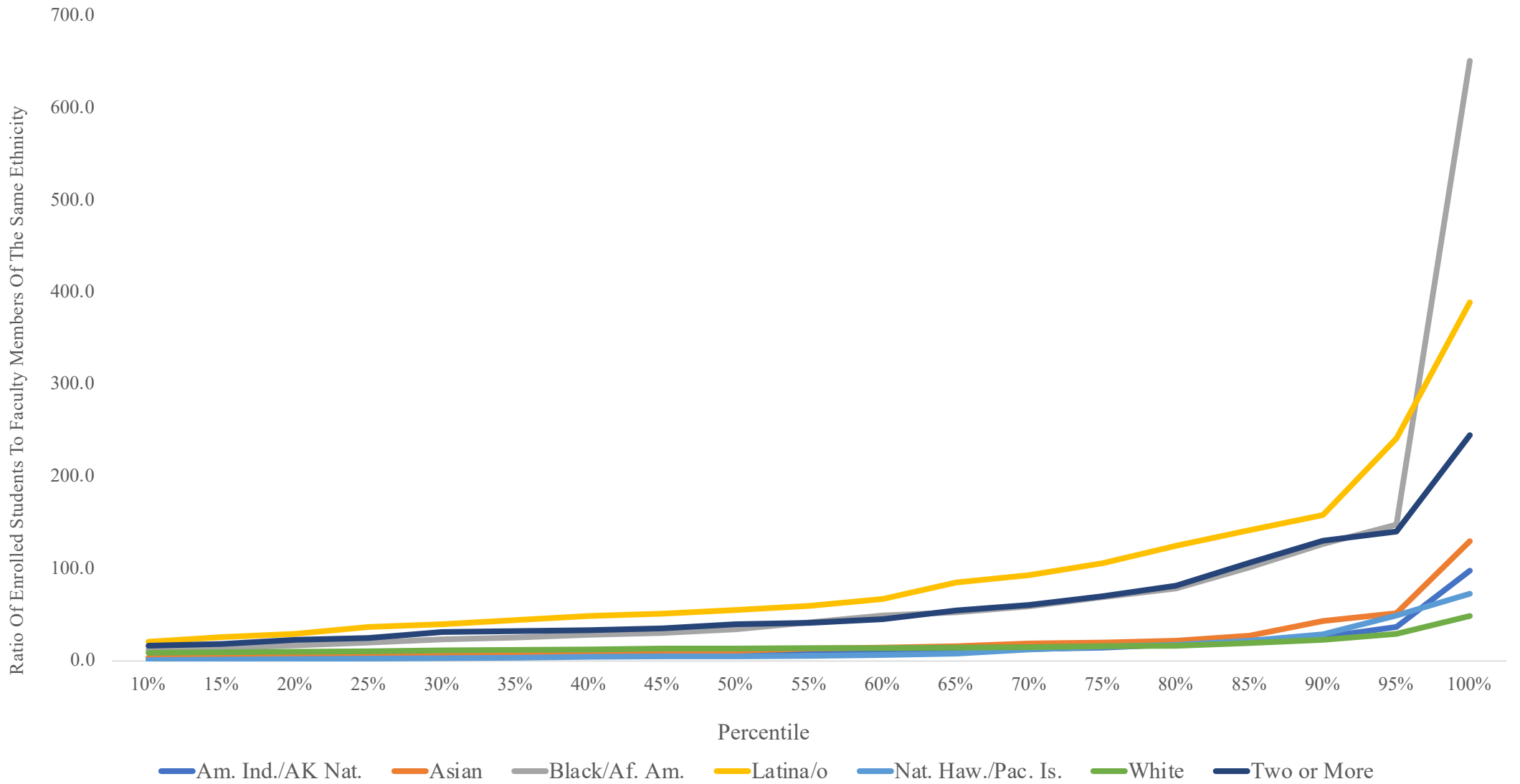
**Table E: Average Ratio Of Enrolled Students To Faculty Members By Ethnicity In 2018: Percentiles**

	American In./Alaskan Native	Asian	Black/African Am.	Latina/o	Nat. Hawaiian/Pac. Islander	White	Two or More Races	Race/Ethnicity Unknown	NonResident Alien
Average*	14.5	17.7	58.0	81.7	13.7	14.9	58.2	44.6	63.8
100 <sup>th</sup> Percentile	98.0	130.0	651.0	389.0	73.0	48.9	245.0	316.0	466.0
75 <sup>th</sup> Percentile	14.3	20.3	69.3	106.0	15.6	16.0	70.5	43.0	63.0
50 <sup>th</sup> Percentile	9.5	11.1	34.5	55.2	5.3	13.7	40.0	19.0	37.5
25 <sup>th</sup> Percentile	5.0	5.9	20.0	37.0	2.8	10.6	25.0	7.1	21.8
<i>n</i> *	29	95	102	89	12	118	51	48	36

Source: U.S. Department of Education, National Center for Education Statistics, Integrated Postsecondary Education Data System (IPEDS)

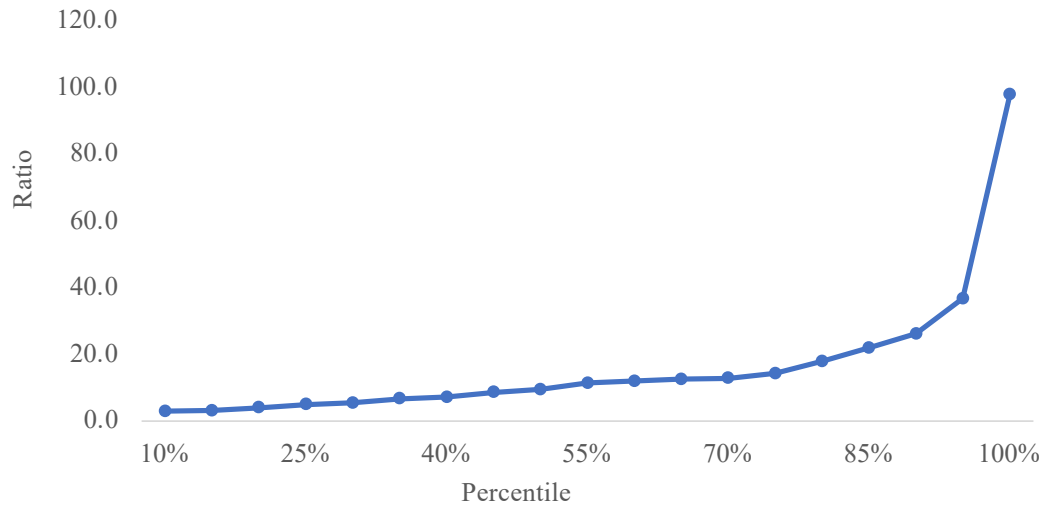
\*Institutions are only included in this table if they have both faculty members and students of a given ethnicity. For example, institutions that have Asian students but no Asian faculty members (or vice versa) are not included.

**Figure E1: Average Ratio Of Enrolled Students to Faculty Members By Ethnicity In 2018: Percentiles**

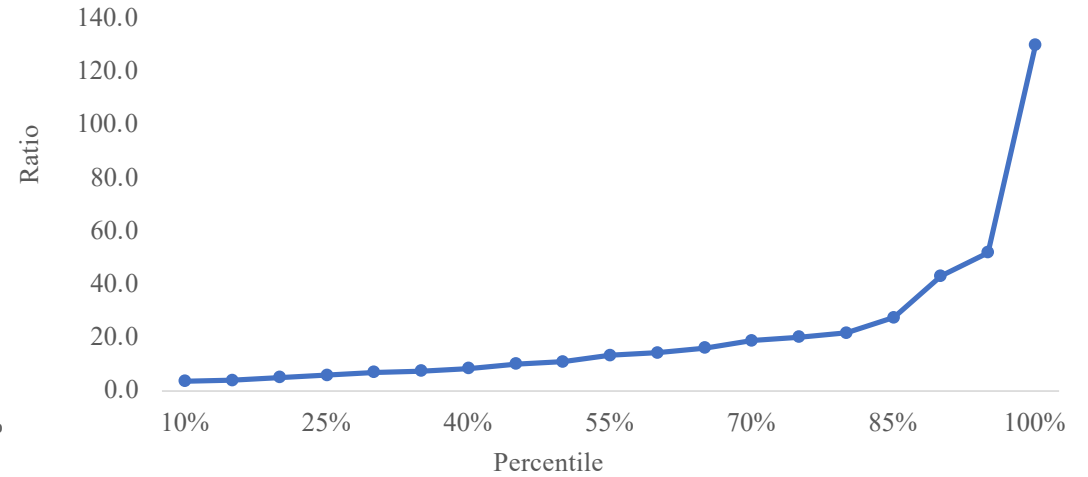


**Figure E2: Average Ratio Of Enrolled Students to Faculty Members By Ethnicity In 2018: Percentiles**

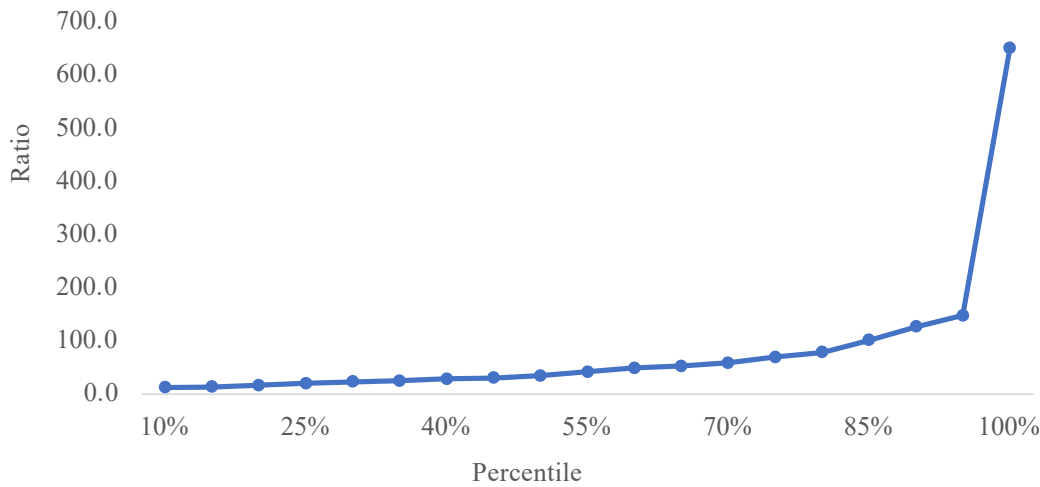
American Indian/Alaskan Nat.



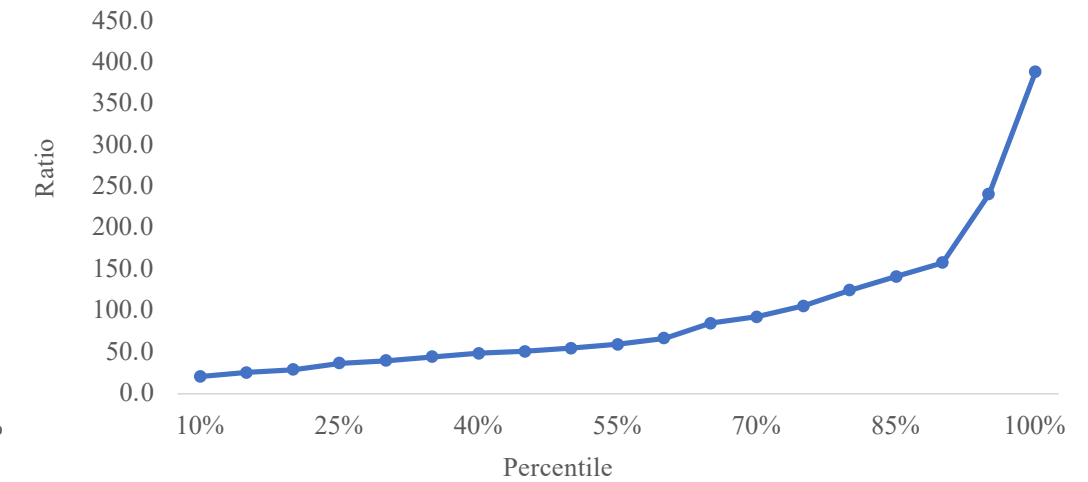
Asian



Black/African American

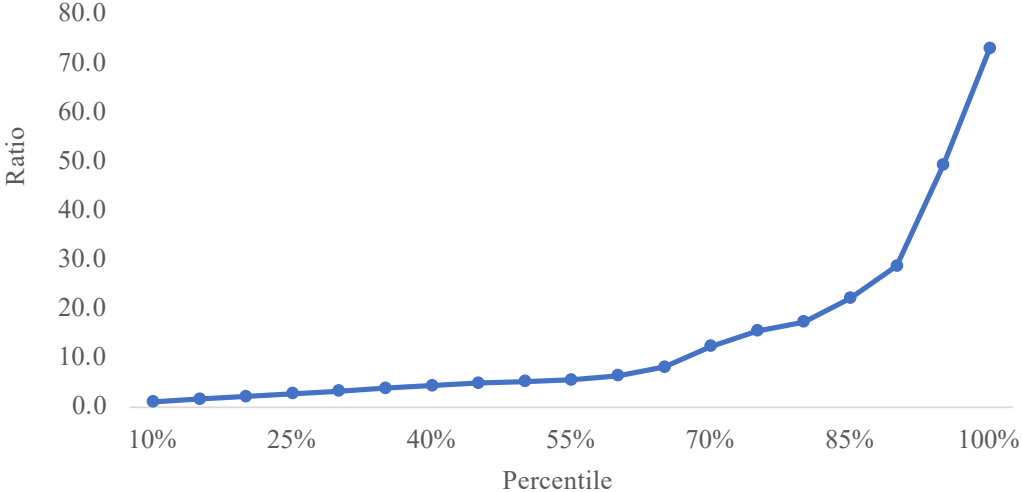


Latina/o

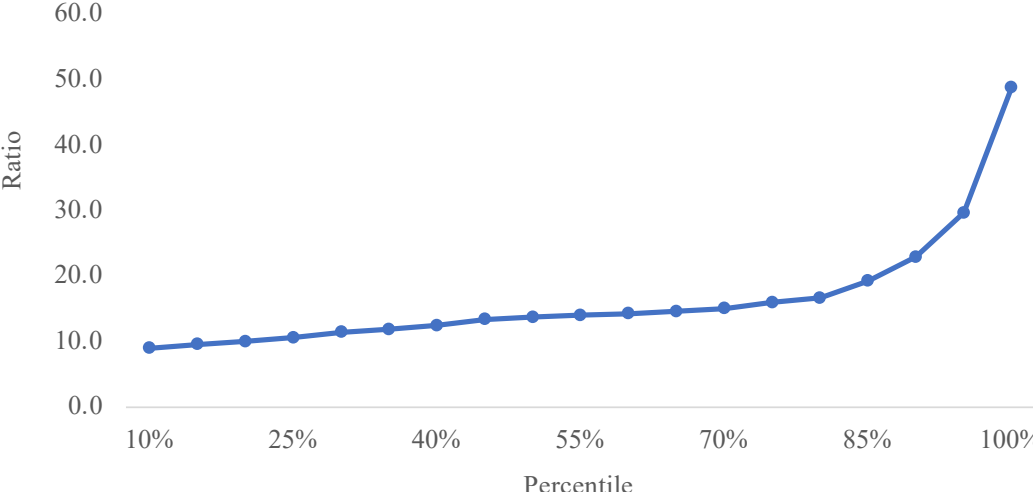


**Figure E2 (continued): Average Ratio Of Enrolled Students to Faculty Members By Ethnicity In 2018: Percentiles**

Native Hawaiian/Pacific Islander



White



Two or More Races

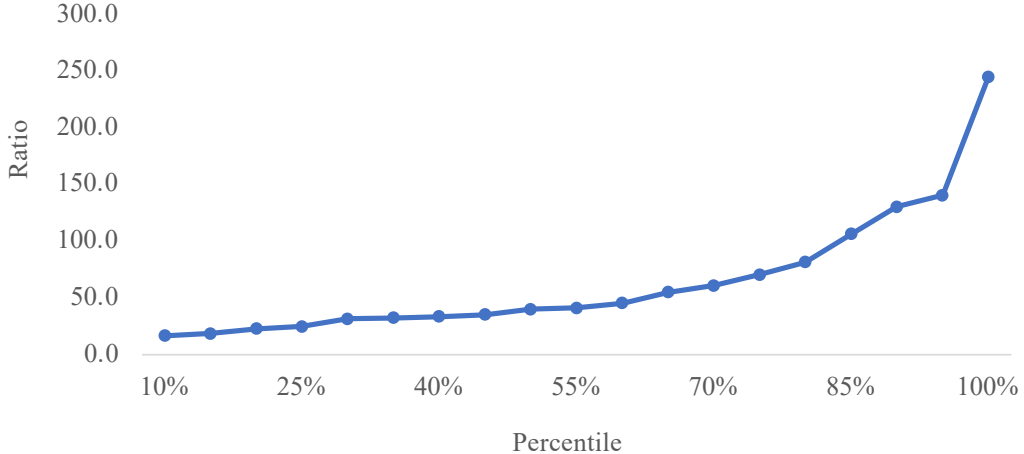




Table F: Percentage Of Total Degrees Awarded By Ethnicity: CCCU And National

*Degree attainment by ethnicity at CCCU institutions compared to national average*

Although the percentage of degree recipients identifying as White fell at CCCU institutions and nationally between 1994-95 and 2018-19, CCCU institutions continue to award a larger percentage of degrees to recipients identifying as White compared to the national average. Both among CCCU institutions and nationally, the percentage of degree recipients identifying as Asian, Black/African American, Latina/o, and Two or More Races increased, although among Asian, Black/African American, and Latina/o degree recipients CCCU institutions trailed the national average throughout the period studied.

*Degree attainment by ethnicity compared to enrollment (compare to Table C)*

Students identifying as White at CCCU institutions constitute a larger percentage of all degree recipients (Table F) than the corresponding percentage of enrolled students (Table C). Students identifying as Black/African American constitute a smaller percentage of all degree recipients than the corresponding percentage of enrolled students.

**Table F: Percentage Of Total Degrees Awarded By Ethnicity**

Year	American In./Alaskan Native		Asian		Black/African Am.		Latina/o		Nat. Hawaiian/Pac. Islander		White		Two or More Races		NonResident Alien	
	CCCU	National	CCCU	National	CCCU	National	CCCU	National	CCCU	National	CCCU	National	CCCU	National	CCCU	National
1995	0.4%	N/A	2.2%	N/A	5.2%	N/A	2.6%	N/A	N/A	N/A	84.2%	N/A	N/A	N/A	3.2%	N/A
2000	0.7%	0.7%	2.1%	6.3%	5.8%	8.7%	3.3%	6.1%	N/A	N/A	82.8%	75.1%	N/A	N/A	2.4%	3.2%
2005	0.6%	0.7%	2.3%	6.8%	7.4%	9.5%	4.3%	7.0%	N/A	N/A	79.3%	72.9%	N/A	N/A	2.1%	3.2%
2010	0.7%	0.8%	2.5%	7.1%	8.2%	10.0%	5.6%	8.5%	N/A	N/A	76.5%	70.8%	N/A	N/A	2.5%	2.9%
2012	0.6%	0.6%	2.6%	7.0%	8.4%	10.4%	6.4%	9.5%	0.2%	N/A	73.6%	67.7%	1.1%	1.5%	2.3%	3.3%
2013	0.7%	0.6%	2.8%	7.1%	8.0%	10.4%	6.8%	10.1%	0.2%	N/A	73.4%	66.4%	1.3%	1.9%	2.2%	3.5%
2014	0.7%	0.6%	3.0%	6.8%	8.0%	10.2%	7.6%	10.8%	0.2%	0.3%	72.0%	65.2%	1.8%	2.4%	2.3%	3.7%
2015	0.7%	0.5%	3.1%	6.8%	7.8%	10.2%	8.2%	11.5%	0.3%	0.3%	70.8%	63.9%	2.4%	2.9%	2.5%	4.0%
2016	0.6%	0.5%	3.2%	7.2%	7.8%	10.1%	9.3%	12.2%	0.2%	N/A	70.0%	62.3%	2.8%	3.2%	2.4%	4.4%
2017	0.5%	0.5%	3.1%	7.4%	7.9%	10.0%	10.0%	12.9%	0.3%	N/A	68.8%	61.1%	3.3%	3.4%	2.7%	4.7%
2018	0.5%	0.5%	3.3%	7.6%	7.8%	9.8%	10.6%	13.5%	0.3%	N/A	68.0%	60.1%	3.6%	3.6%	3.0%	5.0%
2019	0.6%	N/A	3.3%	N/A	7.7%	N/A	11.5%	N/A	0.3%	N/A	67.0%	N/A	3.6%	N/A	3.1%	N/A

Source: U.S. Department of Education, National Center for Education Statistics, Integrated Postsecondary Education Data System (IPEDS).

Tables G1 And G2: Percentage Of Total Degrees Awarded By Ethnicity And Gender: CCCU Institutions And National Average

*Degree attainment by ethnicity and gender compared to national average*

The percentages of female students awarded degrees at CCCU institutions who identify as Asian, Latina, and White (Table G1) are consistently larger than the national average percentages of female students of those same ethnicities who are awarded degrees (Table G2).

*Degree attainment by ethnicity and gender compared to enrollment (compare to Table C)*

The percentages of female students awarded degrees at CCCU institutions who identify as Black/African American and Asian (Table G1) are consistently larger than the percentages of female enrolled students of those same ethnicities (Table C).

**Table G1: Percentage Of Total Degrees Awarded By Ethnicity And Gender: CCCU Institutions**

Year	American In./Alaskan Native		Asian		Black/African Am.		Latina/o		Nat. Hawaiian/Pac. Islander		White		Two or More Races		Race/Ethnicity Unknown		NonResident Alien	
		Women		Women		Women		Women		Women		Women		Women		Women		Women
1995	0.4%	53.7%	2.2%	55.6%	5.2%	62.3%	2.6%	54.6%	N/A	N/A	84.2%	57.2%	N/A	N/A	2.2%	54.3%	3.2%	48.1%
2000	0.7%	62.0%	2.1%	60.7%	5.8%	67.4%	3.3%	62.2%	N/A	N/A	82.8%	59.6%	N/A	N/A	3.0%	39.9%	2.4%	55.6%
2005	0.6%	63.1%	2.3%	64.2%	7.4%	68.6%	4.3%	64.4%	N/A	N/A	79.3%	60.5%	N/A	N/A	3.9%	57.3%	2.1%	48.7%
2010	0.7%	62.7%	2.5%	61.0%	8.2%	69.6%	5.6%	63.1%	N/A	N/A	76.5%	60.8%	N/A	N/A	4.1%	62.1%	2.5%	51.4%
2012	0.6%	62.4%	2.6%	59.7%	8.4%	67.3%	6.4%	64.2%	0.2%	52.1%	73.6%	60.8%	1.1%	62.2%	4.8%	60.8%	2.3%	51.8%
2013	0.7%	59.9%	2.8%	62.3%	8.0%	67.9%	6.8%	65.5%	0.2%	47.4%	73.4%	60.9%	1.3%	58.8%	4.6%	59.8%	2.2%	51.0%
2014	0.7%	60.3%	3.0%	61.9%	8.0%	66.0%	7.6%	65.9%	0.2%	61.2%	72.0%	61.4%	1.8%	64.5%	4.4%	61.7%	2.3%	48.2%
2015	0.7%	57.5%	3.1%	61.7%	7.8%	65.9%	8.2%	64.5%	0.3%	61.9%	70.8%	61.8%	2.4%	64.8%	4.2%	59.4%	2.5%	48.2%
2016	0.6%	64.8%	3.2%	62.7%	7.8%	64.3%	9.3%	65.9%	0.2%	57.5%	70.0%	61.8%	2.8%	62.8%	3.7%	58.4%	2.4%	49.1%
2017	0.5%	59.9%	3.1%	62.8%	7.9%	63.6%	10.0%	67.6%	0.3%	63.2%	68.8%	62.2%	3.3%	62.9%	3.3%	60.3%	2.7%	51.1%
2018	0.5%	64.4%	3.3%	64.0%	7.8%	62.8%	10.6%	66.0%	0.3%	56.4%	68.0%	62.5%	3.6%	63.9%	3.0%	60.6%	3.0%	46.7%
2019	0.6%	63.0%	3.3%	64.2%	7.7%	62.3%	11.5%	66.9%	0.3%	52.4%	67.0%	62.5%	3.6%	60.3%	3.0%	59.3%	3.1%	50.4%

Source: U.S. Department of Education, National Center for Education Statistics, Integrated Postsecondary Education Data System (IPEDS)

**Table G2: Percentage Of Total Degrees Awarded By Ethnicity And Gender: National Average**

Year	American In./Alaskan Native		Asian		Black/African Am.		Latina/o		Nat. Hawaiian/Pac. Islander		White		Two or More Races		Race/Ethnicity Unknown		NonResident Alien	
	Men	Women	Men	Women	Men	Women	Men	Women	Men	Women	Men	Women	Men	Women	Men	Women	Men	Women
2000	0.7%	60.3%	6.3%	57.5%	8.7%	65.7%	6.1%	59.6%	N/A	N/A	75.1%	56.6%	N/A	N/A	N/A	N/A	3.2%	46.8%
2005	0.7%	59.8%	6.8%	55.0%	9.5%	66.3%	7.0%	60.9%	N/A	N/A	72.9%	56.5%	N/A	N/A	N/A	N/A	3.2%	48.7%
2010	0.8%	60.7%	7.1%	54.5%	10.0%	65.9%	8.5%	60.7%	N/A	N/A	70.8%	56.0%	N/A	N/A	N/A	N/A	2.9%	50.8%
2012	0.6%	61.1%	7.0%	54.4%	10.4%	65.7%	9.5%	60.5%	N/A	N/A	67.7%	56.1%	1.5%	59.8%	N/A	N/A	3.3%	50.1%
2013	0.6%	59.7%	7.1%	54.0%	10.4%	64.8%	10.1%	60.3%	N/A	N/A	66.4%	56.2%	1.9%	59.5%	N/A	N/A	3.5%	50.1%
2014	0.6%	61.3%	7.0%	54.5%	10.2%	64.3%	10.8%	60.3%	N/A	N/A	65.2%	56.0%	2.4%	60.1%	N/A	N/A	3.7%	49.4%
2015	0.5%	60.2%	7.1%	54.4%	10.2%	64.1%	11.5%	60.2%	N/A	N/A	63.9%	56.2%	2.9%	59.0%	N/A	N/A	4.0%	48.8%
2016	0.5%	60.7%	7.2%	54.3%	10.1%	64.1%	12.2%	60.5%	N/A	N/A	62.3%	56.3%	3.2%	59.2%	N/A	N/A	4.4%	47.9%
2017	0.5%	61.1%	7.4%	54.6%	10.0%	64.1%	12.9%	60.6%	N/A	N/A	61.1%	56.4%	3.4%	59.3%	N/A	N/A	4.7%	46.9%
2018	0.5%	61.7%	7.6%	54.8%	9.8%	63.9%	13.5%	60.7%	N/A	N/A	60.1%	56.6%	3.6%	59.1%	N/A	N/A	5.0%	46.5%

Source: U.S. Department of Education, National Center for Education Statistics, Integrated Postsecondary Education Data System (IPEDS)

# Part 2: Diversity in STEM

Table H: Percentage of Total STEM Degrees Awarded by Ethnicity and Gender: CCCU Institutions

*Degree attainment by ethnicity (compare to Table F)*

The trend in the percentage of STEM degrees awarded at all CCCU institutions by ethnicity (Table H) reflects the overall trend in the total number of degrees awarded at those institutions by ethnicity during the period studied (Table F). However, degree recipients who identified as Black/African American and Latina/o generally constituted smaller percentage of STEM degree recipients than all degree recipients, while degree recipients who identified as Asian and White generally constituted larger percentages of STEM degree recipients than all degree recipients.

*Degree attainment by ethnicity and gender (compare to Table G1)*

The percentage of female students awarded STEM degrees (Table H) compared to the percentage of female students awarded all degrees at CCCU institutions (Table G1) was consistently lower for all ethnicities. For example, although over 62% of all degree recipients at CCCU institutions who identified as White in 2018 were female (Table G1), only around 42% of all STEM degree recipients at those institutions who identified as White were female (Table H).

**Table H: Percentage Of Total STEM Degrees Awarded By Ethnicity And Gender: CCCU Institutions**

Year	American In./Alaskan Native		Asian		Black/African Am.		Latina/o		Nat. Hawaiian/Pac. Islander		White		Two or More Races		Race/Ethnicity Unknown		NonResident Alien	
	Men	Women	Men	Women	Men	Women	Men	Women	Men	Women	Men	Women	Men	Women	Men	Women	Men	Women
1995	0.3%	0.0%	3.5%	52.2%	2.7%	46.4%	2.0%	52.9%	N/A	N/A	84.1%	40.6%	N/A	N/A	0.9%	45.8%	6.4%	27.3%
2000	0.8%	48.0%	4.1%	51.5%	2.8%	65.9%	2.4%	51.3%	N/A	N/A	83.9%	44.2%	N/A	N/A	2.4%	48.1%	3.6%	38.6%
2005	0.6%	60.0%	3.9%	38.2%	3.6%	64.7%	3.0%	43.0%	N/A	N/A	80.9%	34.2%	N/A	N/A	3.1%	43.1%	5.0%	36.3%
2010	0.7%	46.2%	4.1%	51.7%	3.9%	55.6%	3.4%	50.8%	N/A	N/A	81.6%	40.0%	N/A	N/A	2.7%	45.8%	3.5%	34.4%
2012	0.5%	42.1%	3.7%	53.2%	3.9%	51.0%	4.7%	52.2%	0.2%	14.3%	77.3%	41.5%	1.0%	56.8%	4.5%	37.1%	4.2%	36.9%
2013	0.9%	57.9%	4.1%	51.8%	4.2%	57.7%	4.8%	55.4%	0.1%	50.0%	76.8%	41.3%	1.6%	39.4%	3.1%	36.0%	4.2%	38.8%
2014	0.5%	68.2%	4.8%	46.4%	4.3%	48.9%	6.0%	50.4%	0.1%	66.7%	75.2%	40.7%	2.1%	59.3%	2.9%	46.4%	4.0%	34.1%
2015	0.9%	50.0%	4.2%	52.4%	4.7%	56.3%	6.7%	53.9%	0.3%	57.1%	73.9%	42.1%	2.9%	53.8%	3.1%	43.9%	3.3%	43.2%
2016	0.3%	33.3%	4.3%	50.2%	4.0%	53.4%	6.8%	52.0%	0.2%	54.5%	74.4%	41.0%	3.4%	47.2%	2.9%	37.2%	3.7%	38.3%
2017	0.7%	42.4%	4.1%	46.6%	3.8%	53.6%	8.4%	49.4%	0.2%	33.3%	72.4%	42.5%	3.6%	42.9%	2.7%	44.4%	4.0%	40.9%
2018	0.3%	50.0%	4.6%	49.4%	4.6%	55.1%	8.7%	49.6%	0.2%	50.0%	70.6%	42.5%	3.6%	47.0%	2.3%	45.8%	5.1%	37.4%
2019	0.4%	27.3%	4.7%	50.8%	4.5%	51.5%	9.2%	46.8%	0.2%	30.0%	69.9%	42.1%	3.6%	48.1%	2.4%	36.5%	5.1%	38.4%

Source: U.S. Department of Education, National Center for Education Statistics, Integrated Postsecondary Education Data System (IPEDS)